



**PRESIDENT:**  
**Mr John Gibson**  
**South Gundurimba**  
**NSW 2480**  
**Ph: (02) 66290254**

**SECRETARY:**  
**Mr Eric Rosolen**  
**PO Box 6438**  
**SOUTH LISMORE NSW 2480**  
**0428 659341**

**TREASURER:**  
**Mr John Kendall**  
**8 Chilcott Street**  
**MONALTRIE NSW**  
**0493 125798**

Email: [secretary@lismorepoultryclub.com.au](mailto:secretary@lismorepoultryclub.com.au)

## **YOUNG BIRD SHOW**

**Saturday April 24<sup>th</sup>, 2021**

**THIS SHOW WILL BE CONDUCTED UNDER A COVID SAFE PLAN**

**Please post or email entries to reach the Secretary by 17<sup>th</sup> April 2021.**

**Please No Phone Entries.**

**Entry Fee:** Members: \$1.50 Non-Members: \$2.00 Membership: \$10.00

**Full fee must accompany entries**

**Penning:** Night prior to show: 5.30pm – 8.00pm Day of show: 6.30am – 8.15am

**All birds to be penned by 8.15am the day of show.**

**Judging to Commence at 8.30am**

Entries are made subject to the Club rules. Note Leg bands are allowed on birds, but exhibitors are encouraged to remove them where possible.

If six or more of the same variety and colour are entered in AOV or AOC classes, a new class will be made if the colour/variety is stated on the entry form.

**Judges:** All Softfeather and Waterfowl: John Rutledge

All Hardfeather: Cameron Rutledge

## **CASH AWARDS & RIBBONS**

Champion Bird of Show		Trophy	
Champion Softfeather Bird Large	\$25	Reserve S/F Bird Large	\$15
Champion Hardfeather Bird Large	\$25	Reserve H/F Bird Large	\$15
Champion Softfeather Bantam	\$25	Reserve S/F Bantam	\$15
Champion Hardfeather Bantam	\$25	Reserve H/F Bantam	\$15
Champion Waterfowl	\$25	Reserve Waterfowl	\$15
Champion Junior	Trophy	Reserve Junior	Trophy

## **CASH SPECIALS OF \$5 FOR:**

Best H/F Large OE Game	Best H/F Other Than OEG Large
Best S/F Large Heavy	Best S/F Large Light
Best S/F Bantam Heavy	Best S/F Bantam Light
Best S/F True Bantam	
Best H/F Bantam OE Game	Best H/F Other Than OEG Bantam

**Juniors must enter using open section class numbers but mark entry form "JUNIOR".  
 Juniors must be under 16 years of age, must pen their own birds and cannot exhibit any variety shown by an adult member of the same family.**

~O~O~O~O~O~O~

## **LISMORE POULTRY CLUB SHIRTS & CAPS AVAILABLE**

Shirts from \$42.00 embroider order through George Gooleys Mensland Lismore  
 & Caps \$20.00 from Club Secretary

# FEATURING All Hardfeather other than OEG & Australian Pit Game and All Langshans

## Heavy S/F Large

	<b>Ckl</b>	<b>Pit</b>
Australorp AC	1	2
Australian Langshan AC	3	4
Barnevelder AC	5	6
Croad Langshan AC	7	8
New Hampshire	9	10
Orpington Black	11	12
Orpington AOC	13	14
Plymouth Rock DB	15	16
Plymouth Rock AOC	17	18
Rhode Is Red	19	20
Rhode Is White	21	22
Sussex Buff	23	24
Sussex Light	25	26
Sussex AOC	27	28
Wyandotte Silver Laced	29	30
Wyandotte White	31	32
Wyandotte AOC	33	34
Any Other Variety	35	36



## Light S/F Large

	<b>Ckl</b>	<b>Pit</b>
Ancona Single Comb	39	40
Ancona AOV	41	42
Andalusian	43	44
Araucana AC	45	46
Campine AC	47	48
Hamburg Black	49	50
Hamburg Silver Spangled	51	52
Hamburg AOC	53	55
Lakenvelder	55	56
Leghorn Black	57	58
Leghorn Blue	59	60
Leghorn Brown	61	62
Leghorn White	63	64
Leghorn AOC	65	66
Minorca AC	67	68
Polish AC	69	70
Silkie White	71	72
Silkie AOC	73	74
Spanish AC	75	76
Vorwerk	77	78

## Any Other Variety

79      80

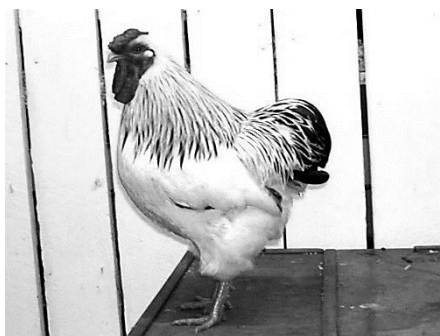


## Hardfeather Large

	<b>Ckl</b>	<b>Pit</b>
American Game AC	81	82
Aust. Pit Plain Face	83	84
Aust. Pit Henfeather	85	86
Aust. Pit Muff	87	88
Australian Black Red	89	90
Australian Blue Red	91	92
Australian Duckwing	93	94
Australian Pile	95	96
Australian AOC	97	98
Indian Dark	99	100
Indian AOC	101	102
Malay AC	103	104
OE Black Red DL	105	
OE Partridge DL		106
OE Black Red LL	107	
OE Partridge LL		108
OE Wheaten Black Tail		109
OE Wheaten Blue Tail		110
OE Blue Red	111	112
OE Brown Red	113	114
OE Crele	115	116
OE Duckwing	117	118
OE Dunn AC	119	120
OE Grey/Birchen	121	122
OE Pile	123	124
OE AOC	125	126
Game A O Variety	127	128



<b>Heavy S/F Bantam</b>	<b>Ckl</b>	<b>Pit</b>
Australorp Black	131	132
Australorp AOC	133	134
Australian Langshan AC	135	136
Frizzle AC	137	138
Orpington Black	139	140
Orpington AOC	141	142
Plymouth Rock DB	143	144
Plymouth Rock LB	145	146
Plymouth Rock AOC	147	148
Rhode Island Red	149	150
Rhode Island White	151	152
Sussex Light	153	154
Sussex AOC	155	156
Wyandotte Columbian AC	157	158
Wyandotte Silver Laced	159	160
Wyandotte Silver Pencilled	161	162
Wyandotte White	163	164
Wyandotte AOC	165	166
Any Other Variety SF Heavy	167	168



<b>Light S/F Bantam</b>	<b>Ckl</b>	<b>Pit</b>
Ancona Single Comb	169	170
Ancona AOV	171	172
Andalusian	173	174
Araucana AC	175	176
Hamburg AC	177	178
Leghorn Black	179	180
Leghorn Blue	181	182
Leghorn Brown	183	184
Leghorn Buff	185	186
Leghorn White	187	188
Leghorn AOC	189	190
Minorca AC	191	192
Spanish AC	193	194
Any Other Variety SF Light	195	196



<b>S/F True Bantam</b>	<b>Ckl</b>	<b>Pit</b>
Belgian d'Anvers	197	198
Belgian d'Uccles	199	200
Belgian de Watermael	201	202
Dutch Bantam Any Colour	203	204
Japanese Black Tailed White	205	206
Japanese AOC	207	208
Pekin Black	209	210
Pekin Blue	211	212
Pekin Buff	213	214
Pekin Cuckoo	215	216
Pekin White	217	218
Pekin AOC	219	220
Rosecomb Black	221	222
Rosecomb AOC	223	224
Sebright AC	225	226
True Bantam AOV	227	228

## *Lismore Poultry Club Inc.*

### **ANNUAL SHOW**

To be held on

**Saturday 12<sup>TH</sup> JUNE 2021**

**FEATURING**

**HF other than OEG or**

**Australian Pit Game & All  
Langshan Varieties Breeds**

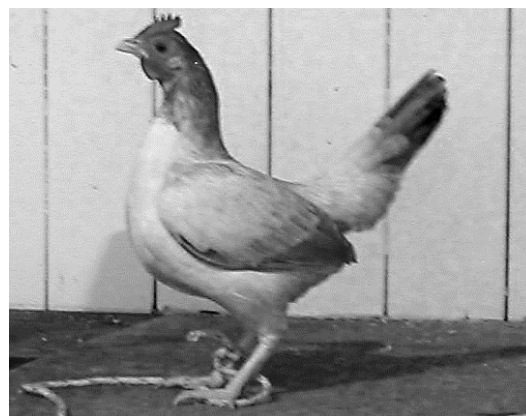
**Awards For**

**Champion HF Feature Breed**

**Champion SF Feature Breed**

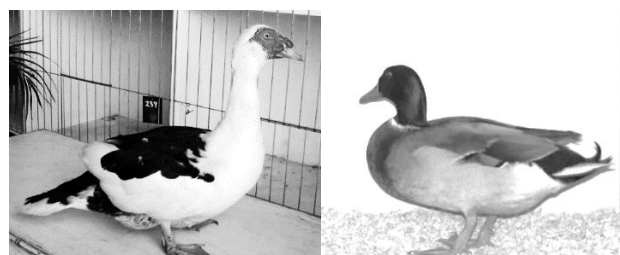
**Best cock, hen, cockerel & pullet**

<b>Hardfeather Bantam</b>	<b>Ckl</b>	<b>Pit</b>			
American Game AC	241	242	OE Blue	273	274
Aust. Pit Plain Face	233	234	OE Brown Red	275	276
Aust. Pit Henfeather	235	236	OE Crele	277	278
Aust. Pit Muff	237	238	OE Duckwing DL	279	280
Australian Black Red	239	240	OE Duckwing LL	281	282
Australian Blue Red	241	242	OE Ginger	283	284
Australian Duckwing	243	244	OE Pile	285	286
Australian Pile	245	246	OE Spangle	287	288
Australian AOC	247	248	OE AO Colour	289	290
Indian Dark	249	250	Game AO Variety	291	292
Indian AOC	251	252			
Modern Black Red	253	254			
Modern Duckwing	255	256			
Modern Pile	257	258			
Modern Wheaten AC	259	260			
Modern AOC	261	262			
OE Black Red DL	263				
OE Partridge DL		264			
OE Black Red LL	265				
OE Partridge LL		266			
OE Black Tail Wheaten		267			
OE Blue Tail Wheaten		268			
OE Blue Red	269	270			
OE Black	271	272			



#### **WATERFOWL & FIELD**

Aylesbury	301	302	Mallard Natural	333	334
Campbell AC	303	304	Mallard White	335	336
Cayuga	305	306	Mallard AOC	337	338
Crested AC	307	308	Saxony Bantam	339	340
Indian Runner White	309	310	Bantam Duck AO Variety	341	342
Indian Runner AOC	311	312	Chinese AC	343	344
Muscovy Black & White	313	314	Geese AOV	345	346
Muscovy White	315	316	Guinea Fowl AC	347	348
Muscovy AOC	317	318	Turkey AV	349	350
Orpington	319	320			
Pekin	321	322			
Rouen	323	324			
Saxony	325	326			
Standard Duck AO Variety	327	328			
Australian Call White	329	330			
Australian Call AO Colour	331	332			



**DEVELOPMENT CLASSES- Breeds and Varieties in these classes are those not included in the Australian Poultry Standard and Addendum. Those breeds and varieties imported since the printing of Addendum will be eligible for Any Other Variety Classes if a written Standard is available in British Poultry Standard. Entries in Development Classes are not eligible for Major Awards.**

Softfeather Heavy Large	351	352	Softfeather True Bantam	361	362
Softfeather Light Large	353	354	Hardfeather Bantam	363	364
Hardfeather Large	355	356	Waterfowl Large	365	366
Softfeather Heavy Bantam	357	358	Waterfowl Bantam	367	368
Softfeather Light Bantam	359	360			



## ELECTRONIC TRANSFER OF FUNDS

Exhibitors may choose to pay entry fees and membership via electronic funds transfer directly to the Clubs bank account. The bank details are as follows:

**Bank:** Westpac Bank  
**Branch:** Lismore NSW  
**BSB Number:** 032-539  
**Account No :** 00580 404  
**Account Name:** Lismore Poultry Club Inc.  
**Please use Surname of exhibitor as reference.**

If you choose to use this option, please complete the details below and return this form with your entries.

**Name:** \_\_\_\_\_

**Deposit Amount:** \$ \_\_\_\_\_

**Date of Deposited:** \_\_\_\_/\_\_\_\_/\_\_\_\_

**Confirmation Number:** \_\_\_\_\_